



PARTICIPANT GUIDE
April 17-18, 2026
Fritch, TX

BROUGHT TO YOU BY



**TEXAS
OUTLAW
RUNNING**



WELCOME

10K | 25K | 50K | 50M | 10K RUCK

April 17-18, 2026

**Fritch Harbor Bay - South Turkey
Creek Trailhead PIN**

Lake Meredith National Recreation Area

Welcome to the 3rd "West Texas Ultra". This is an original event crafted by Texas Outlaw Running Company. This race takes place at Fritch Harbor Bay at Lake Meredith National Recreation Area. The race follows a 30-miles of unique trails beginning and ending at Fritch TX at the South Turkey Creek Trailhead. We are so excited for the amazing weekend on the trails.

We encourage you to take time to carefully read through this participant guide to help better prepare you for your race that's ahead.

If you have any questions after reading through please email us at: Info@TexasOutlawRunning.com

FRIDAY

- 4PM to 6PM - Early Packet Pickup + Texas Outlaw Running Pop Up Store
- 6PM - 10K Friday Night Race
- 6PM - 10K Ruck (25lb minimum) START

SATURDAY

- *RACE BRIEFS 10 MIN. BEFORE EACH RACE.*
- *Please arrive 30 min. before your start time*
- 6-8AM - Packet Pickup
- 7AM - 50M/50K START
- 7:30AM - 25K START
- 8:00AM - 10K START
- 8:30PM - Cutoff (13.5 hours)

**TEXAS
OUTLAW
RUNNING**





GENERAL INFO

DRIVING DIRECTIONS

The start and finish line will be located at the Fritch Harbor Bay. When on Broadway St/TX-136 turn onto Lakeview Drive. Follow the road all the way to the Fritch Harbor Bay - South Turkey Creek Trailhead - [Google PIN](#)

MEDICAL

We will be using nearby public medical personnel. PLEASE CALL 911 in case of an emergency.

RESTROOMS

Portable restrooms will be available outside the start/finish area.

RACE TIMING

We will utilize the UltraSignup timing software (manual time.) We will time you using your bib number so please make sure your bib number is visible on the front of your body.

AID STATIONS

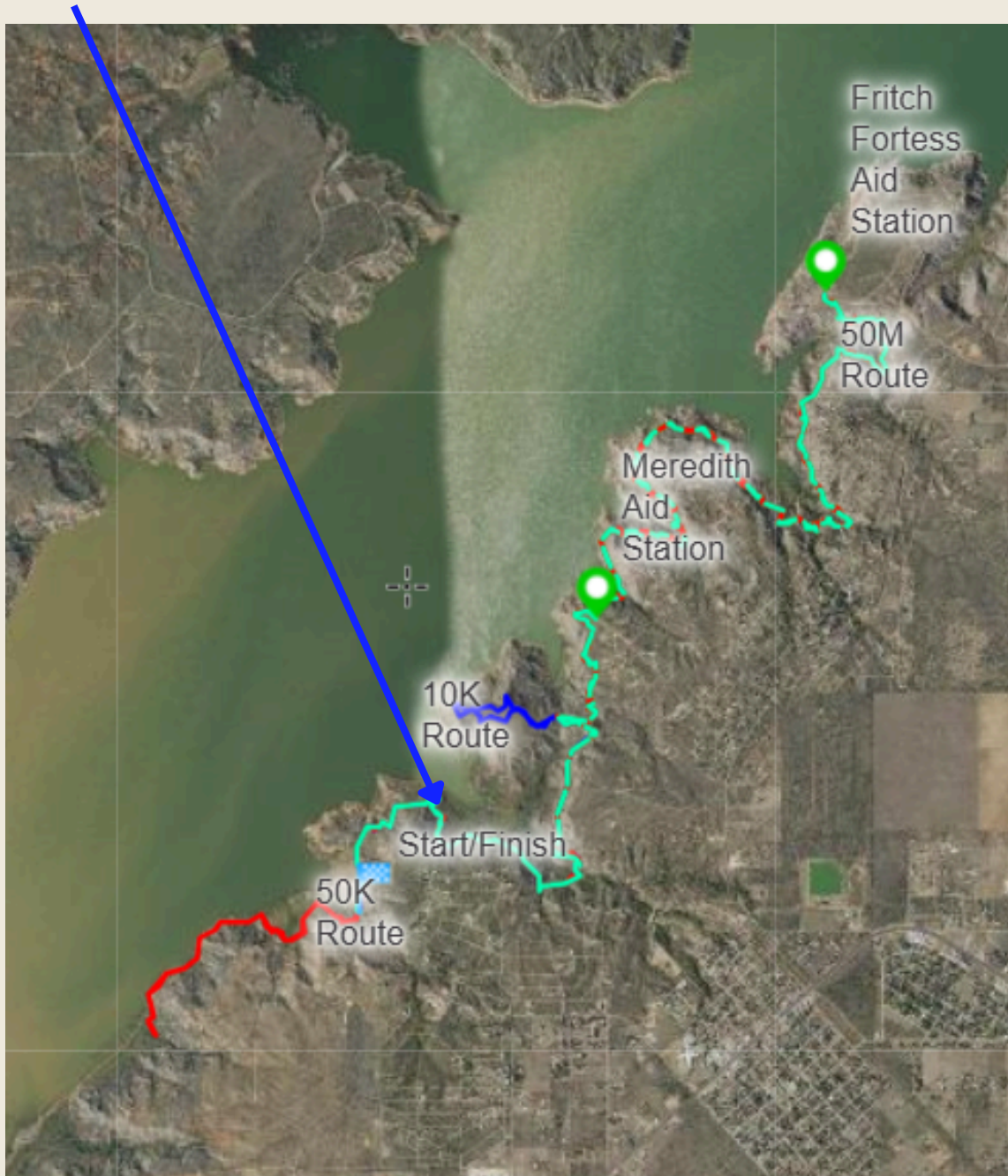
Main Aid Station will be at the start/finish line.

- Aid stations: hot/cold foods, snacks, water, electrolytes, pickle juice & ice



COURSE MAP

Start/Finish Line



*Click the Map to go to interactive course map



COURSE DETAILS

COURSE PROFILE

Lake Meredith National Recreation Area offers a peaceful retreat in the heart of rugged grasslands. Over thousands of years, the Canadian River carved dramatic 200-foot canyons—known as breaks—that now frame the lake in striking layers of color and texture. The course features rugged hills and climbs with gains and loss of 4500ft for the 50M.

[-> Click here to the course map link.](#)





IMPORTANT

DROP BAGS

Runners are responsible for their own drop bags. Drop bag transportation to aid stations is not available. Feel free to place drop bags at start-finish line area.

BIBS

Please make sure that the bib number is visual and on the front of your body. We will use your bib number to identify you and record your time.

CUPLESS RACE/CARRYING

To reduce waste out on the trails and in general we follow the cupless race protocol. This means that we will not serve any cups at aid stations for drinks. Please bring your own water carrying system with at least 32 oz.

ADDITIONAL INFO

- This is an extremely remote area
- These are single-track out-n' back trails - participants will run into each other.





COURSE MARKINGS



The trails will consist of white and orange signage. At road intersections, we will have the white signs as seen above with reflective tape.



RACE RULES

TRAIL RUNNING RULES

- No Littering (If caught disqualification will occur.)
- Runners must follow the marked course.
- Race cutoff will be enforced.
- Be aware of your surroundings. You're partially in the wilderness, there can be wild animals/snakes.
- Please be respectful to all volunteers, race staff, and other race personnel.

WEATHER FORECAST as of 04/10/26 for Saturday 6AM - 12PM - 4PM - 8PM

Temp Forecast: 42° - 59° - 69° - 68°

Feels Like: 34° - 51° - 64° - 60°

Rain: 0%

Wind: 9mph NNE - 14mph WNW - 15mph SSW - 14mph SSE





AWARDS

ALL DISTANCES

- WTU Finisher Medal - A Texas Ultra Series Collectible for ALL DISTANCES
- West Texas Ultra t-shirt for ALL DISTANCES
- RUCK - West Texas Ultra Ruck Patch

50 MILER

- 1st Place Male
- 1st Place Female
- "50M" Inscription on Back of Finisher Medal

- Last Place - "Dead Freakin" Last Trophy

50 KILOMETER

- 1st Place Male
- 1st Place Female
- "50K" Inscription on Back of Finisher Medal



TEXAS ULTRA CHAMPIONSHIP

November 7th, 2026 in Georgetown, TX:

[Click Here to Learn More](#)



The Top 7 Males and Top 7 Females that run the 100K of this race will get their ticket to run the Texas Ultra Championship 100K for a chance to win thousands of dollars, prizes and the Texas Ultra Championship Title.

TEXAS
OUTLAW
RUNNING



SOCIAL MEDIA



INSTAGRAM

@TexasOutlawRunning

FACEBOOK

@TexasOutlawRunning

TWITTER

@RunningOutlaw

YOUTUBE

Texas Outlaw Running Company

PODCAST

Texas Outlaw Running Talk Show

[Click Here](#) to join the conversation in our Facebook Event.

TEXAS
OUTLAW
RUNNING

