

# DESERT WOLF

PARTICIPANT GUIDE  
April 25, 2026  
Johnson City, TX

BROUGHT TO YOU BY



TEXAS  
OUTLAW  
RUNNING



# WELCOME

5K, 12K, 25K, 50K, 100K + 25K RUCK

**April 25, 2026**

Flat Creek Crossing Ranch

339 Ulrich Rd, Johnson City, TX 78636 (PIN)

Welcome to the Desert Wolf! This is an original event crafted by Texas Outlaw Running Company. This race takes place at Flat Creek Crossing Ranch and follows a 25k loop course showing 1400ft elevation gain. We are so excited for the amazing weekend with a memorable atmosphere, beautiful views, and fun on the trails.

We encourage you to take time to carefully read through this participant guide to help better prepare you for your race that's ahead.

If you have any questions after reading through please email us at: [Info@TexasOutlawRunning.com](mailto:Info@TexasOutlawRunning.com)

## FRIDAY

- 6:00-7:00PM - Early Packet Pickup + Texas Outlaw Pop Up Store

## SATURDAY

\*RACE BRIEFS 10 MIN. BEFORE EACH RACE.\*

\*Please arrive 30 min. before your start time\*

- 5:15AM - 8:00AM Packet Pickup
- 6:00AM - 100K START
- 7:00AM - 50K START
- 7:30AM - 25K Run & Ruck STARTS
- 8:00AM - 5K & 12K STARTS

## SUNDAY

- 3:00am - Cutoff (21 hours)

## RUCK

- 25LB Minimum
- Ruck sack or vest

TEXAS  
OUTLAW  
RUNNING



# GENERAL INFO



## DRIVING DIRECTIONS

The start and finish line will be located at the Flat Creek Crossing Ranch (link to location). When driving west on Pedernales Falls Rd, you will pass Madrone Springs Ranch on your right and turn right onto Ulrich Rd. Flat Creek Crossing Ranch will be on your left.

## RESTROOMS

Portable restrooms will be available outside the start/finish area.

## CAMPSITES

Pedernales Falls State Park (10 min. from start/finish)

[Click Here to reserve a site](#)

\*No camping allowed at the ranch itself.

## AID STATIONS

We will have 2 aid stations and 1 water station (Mile 12.2). The main aid station will be available at the start/finish.

### Main Aid Station (Mile 0/7.7/15.5)

hot/cold foods, snacks, water, electrolytes, pickle juice & ice

### Coyote Yak Aid Station (Mile 10.8/13.7)

hot/cold foods, snacks, water, electrolytes, pickle juice & ice

## DROP BAGS

\*Feel free to place drop bags at the start/finish line area.

\*Drop bag transportation to Coyote Yak Aid Station is available for 100K & 50K.

- *Drop your bag @ packet pickup between 6 & 7AM to be transported to Coyote Yak*

## RACE TIMING

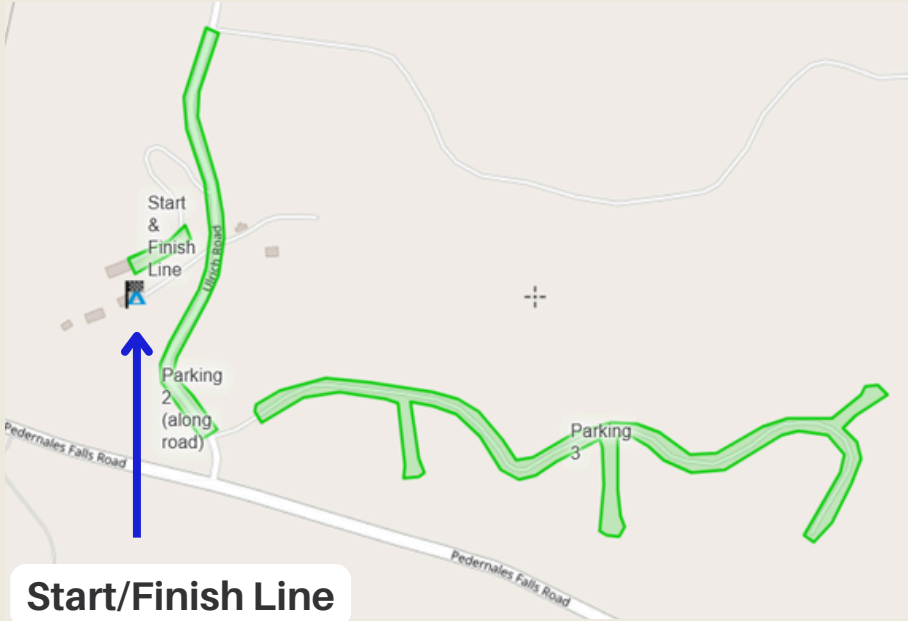
We will utilize the UltraSignup timing software (manual time.) We will time you using your bib number so please make sure your bib number is visible on the front of your body.

## MEDICAL

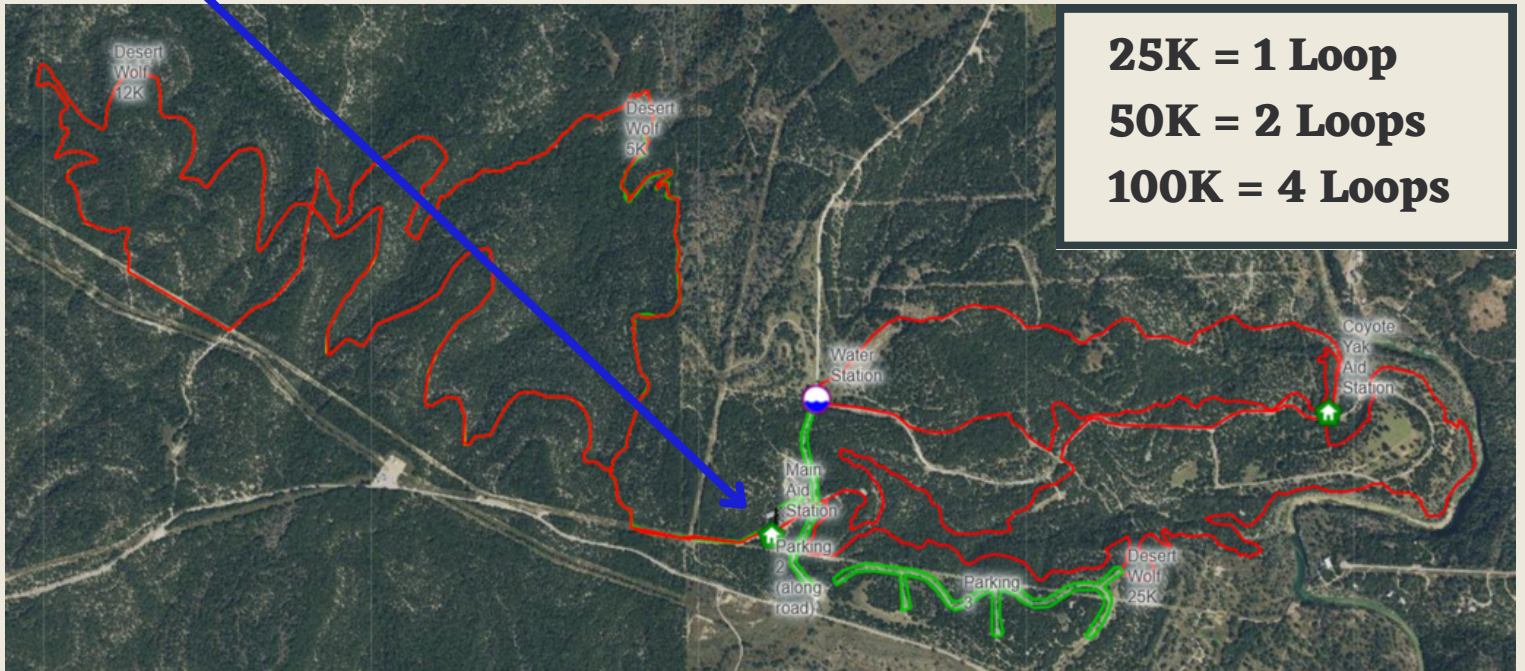
We will be using nearby public medical personnel 911 in case of an emergency



# PARKING / COURSE MAP



Start/Finish Line



\*Click on the map to go to the interactive course map

# COURSE DETAILS



## COURSE PROFILE

Flat Creek Crossing Ranch features 500-acres of property with endless opportunities for fun and relaxation in the heart of the Texas Hill Country. With 13 miles of well-maintained hiking flat creek, the ranch invites adventurers of all skill levels to explore its natural beauty. This race features beautiful scenery and challenging rocky & dirt single and wide track trails with 1400 feet of elevation for the 25K loop, 500ft for the 12k loop, and 300ft for the 5K loop.



# IMPORTANT



## **DROPPING OUT OF THE RACE**

You must notify the race director at the start/finish line **BEFORE** leaving the race site if you decide to quit or drop out of the race.

## **BIBS**

Please make sure that the bib number is visual and on the front of your body. We will use your bib number to identify you and record your time.

## **HEADLAMPS**

Headlamps & phones **REQUIRED** for 100K and 50K

## **NO DOGS ALLOWED**

\*ranch does not allow dogs on property\*

## **PACERS**

Pacers are allowed on the last 2 loops of the 100K, and last loop of the 50K. [Sign Up Here](#)

## **CUPLESS RACE/CARRYING**

To reduce waste out on the trails and in general we follow the cupless race protocol. This means that we will not serve any cups at aid stations for drinks. Please bring your own water carrying system with at least 16 oz (32oz recommended).





# COURSE MARKINGS



The trails will consist of orange signage, flagging (and yellow red reflective tape on the orange signs) as seen above. The orange signage and flags will also be seen throughout the course at intersections to show you where to go.

# RACE RULES



## TRAIL RUNNING RULES

- No Littering (If caught disqualification will occur.)
- Runners must follow the marked course and no cutting the course.
- Runners must have their phones on them, on, etc during the race.
- Race cutoff will be enforced.
- Be aware of your surroundings. You're partially in the wilderness, there can be wild animals/snakes.
- Please be respectful to all volunteers, race staff, and other race personnel.



## WEATHER FORECAST as of 04/20/26 for Saturday 6AM - 12PM - 4PM - 10PM

Temp Forecast: 70° - 80° - 87° - 75°

Feels Like: 69° - 79° - 86° - 73°

Rain: 35%

Wind: 8mph S - 11mph S - 10mph S - 11mph S



TEXAS  
OUTLAW  
RUNNING



# AWARDS



## AWARDS/RACE GEAR

- Big Desert Wolf Finisher Medal for ALL DISTANCES
- Desert Wolf Tri-Blend Tee for ALL DISTANCES
- 1st Place Award for M & F for ALL DISTANCES
- Desert Wolf 25K RUCK Patch

## 50k/100K FINISHERS

- Big Desert Wolf 50K Finisher buckle
- Desert Wolf 100K Finisher belt buckle
- "Dead Freakin" Last Place Award for 100K



# SOCIAL MEDIA



## INSTAGRAM

@TexasOutlawRunning

## FACEBOOK

@TexasOutlawRunning

## TWITTER

@RunningOutlaw

## YOUTUBE

Texas Outlaw Running Company

## PODCAST

Texas Outlaw Running Talk Show



Saturday at 6 AM

## Desert Wolf

Flat Creek Crossing Ranch

[Click Here](#) to join the conversation in our Facebook Event.

TEXAS  
OUTLAW  
RUNNING

