



PARTICIPANT GUIDE
February 21, 2026
Marble Falls, TX

BROUGHT TO YOU BY



TEXAS
OUTLAW
RUNNING



GOLIATH'S 50



WELCOME

5K, 10K, 10M, 20M, 50K,
"Goliath's" 50M + 10M RUCK

Feb. 21, 2026

Shaffer Bend Recreation Area
706 Co Rd 343A | Marble Falls, Texas 78654

Welcome to Goliath's 50. This is an original event crafted by Texas Outlaw Running Company. Goliath's 50 is a dirt & rocky single track trail that follows a 10M loop with 590-ft elevation gain each loop. We are so excited for the amazing weekend on the trail.

We encourage you to take time to carefully read through this participant guide to help better prepare you for your race that's ahead.

If you have any questions after reading through please email us at: info@TexasOutlawRunning.com

Friday

4PM-6PM Early Packet Pickup
@ Start/Finish Line ([Google PIN](#))

Saturday

5AM-7AM - Packet Pickup @ Start/Finish Line
6AM - 50 Miler START
6:20AM - 50K START
6:40AM - 20 Miler, 10 Miler & 10 Mile Ruck START
7AM - 5K & 10K START
10PM - Cutoff for all events (16 Hours)

RUCK Weight requirements

- If you weigh more than 150 lbs = 30 lb. Ruck
- If you weigh less than 150 lbs = 20 lb. Ruck
- *Ruck Sack or Vest is allowed

What's a RUCK? [Click Here](#)

**TEXAS
OUTLAW
RUNNING**



GOLIATH'S 50



GENERAL INFO

DRIVING DIRECTIONS

The start/finish line will be located inside Shaffer Bend Recreation Area. Take E Farm to Market 1431, turn onto Co Rd 343A, follow road to turn into Shaffer Bend Recreation Area. Take the road all the way to the start/finish line.

PIN LOCATION



MAIN AID STATION

- **10 Mile Loop:** (0.0 / 4.9 / 10.2)

- **5K Loop:** (0.0 / 3.1)

Main aid station will be at the Start/Finish line. We will have water, electrolytes, bananas, pretzels and other salty/savory snacks.

RACE TIMING

We will utilize the UltraSignup timing software (manual time.) We will time you using your bib number so please make sure your bib number is visible on the front of your body.

MEDICAL

We will be using nearby public medical personnel. PLEASE CALL 911 in case of an emergency.

RESTROOMS

Restrooms will be available near the Finish Line area.

PARKING

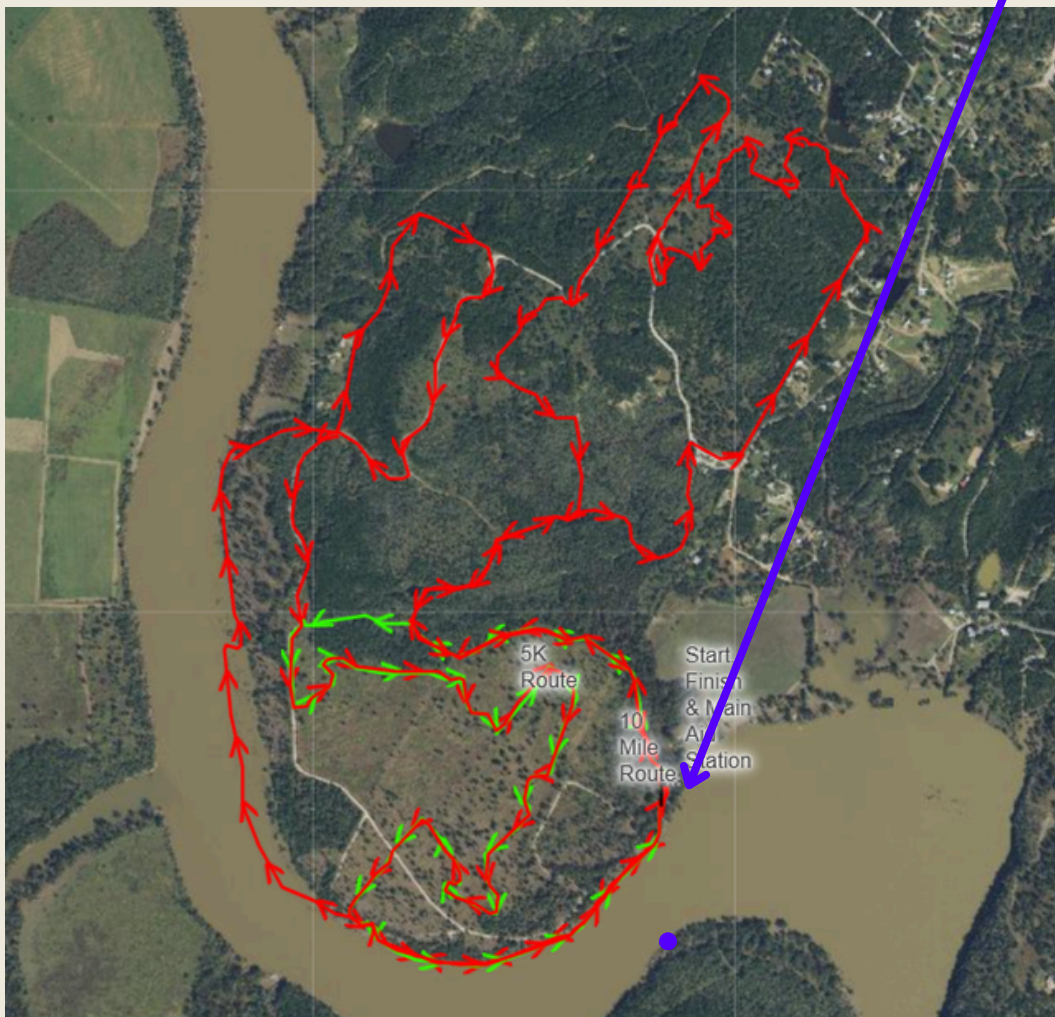
Parking is limited so park along the road near the Start/Finish line, inside Shaffer Bend Recreation Area.

COURSE MAP

Red- 10M loop

Green- 5K loop

Main Aid Station & Start/Finish Line



GOLIATH'S 50



COURSE DETAILS

COURSE PROFILE

The Goliath's 50 is a trail run held at Shaffer Bend Recreation Area. Shaffer Bend Recreation Area is a hidden gem in the Texas Hill Country, offering a serene escape with its 508 acres of natural beauty. The park is managed by the Lower Colorado River Authority (LCRA) and is known for its wildlife viewing, wildflower displays in spring, and equestrian-friendly trails.. The race features beautiful scenery and challenging rooty, dirt, and grass trails with 590 feet of elevation for the 10M loop. The race follows a single-track trail with the start/finish line at the .



TEXAS
OUTLAW
RUNNING



GOLIATH'S 50



IMPORTANT

DROPPING OUT OF THE RACE

You must notify the race director at the start/finish line BEFORE leaving the race site if you decide to quit or drop out of the race.

BIBS

Please make sure that the bib number is visual and on the front of your body. We will use your bib number to identify you and record your time.

CUPLESS RACE/CARRYING

To reduce waste out on the trails and in general we follow the cupless race protocol. This means that we will not serve any cups at aid stations for drinks. Please bring your own water carrying system with at least 16 oz.

CAMPING

If you're traveling out of town you can camp at Shaffer Bend Recreation Area (1 min. from start/finish) - [Book Now!](#)



**TEXAS
OUTLAW
RUNNING**



GOLIATH'S 50



COURSE MARKINGS



The trails will consist of white and orange signage.

GOLIATH'S 50



RACE RULES

TRAIL RUNNING RULES

- No Littering (If caught disqualification will occur.)
- Runners must follow the marked course and no cutting the course.
- Runners must have their phones on them, on, etc during the race.
- Race cutoff will be enforced.
- Be aware of your surroundings. You're partially in the wilderness, there can be wild animals/snakes.
- Please be respectful to all volunteers, race staff, and other race personnel.

**WEATHER FORECAST as of 02/17/26
for Saturday 6AM - 10AM - 3PM - 8PM**

Temp Forecast: 52° - 62° - 70° - 56°

Feels Like: 46° - 56° - 64° - 46°

Rain: 0%

Wind: 8mph NW - 14mph NNW - 14mph N - 12mph N



**TEXAS
OUTLAW
RUNNING**



GOLIATH'S 50



AWARDS

RACE GEAR/AWARDS

- Goliath's 50 long-sleeve for ALL DISTANCES
- 1st place awards M & F for ALL DISTANCES
- Goliath's 50 Finisher Medal for ALL DISTANCES
- 10 Mile Ruck Patch for ruck finishers
- 50 Miler "I Conquered Goliath" Belt Buckle



SOCIAL MEDIA



INSTAGRAM

@TexasOutlawRunning

[Click Here](#) to join the conversation in our Facebook Event.

FACEBOOK

@TexasOutlawRunning

TWITTER

@RunningOutlaw

YOUTUBE

Texas Outlaw Running Company

PODCAST

Texas Outlaw Running Talk Show

TEXAS
OUTLAW
RUNNING



Texas Legend Series

COWBOY YETI



TRAIL RUN IN BASTROP TX

This series includes three races located in Texas.

Cowboy YETI (Bastrop TX)

Jan 17th | 7K, 20K, 40K, 60K, 100K + 20K Ruck

Goliath's 50 (Marble Falls, TX) [Sign Up](#)

Feb 21st | 5K, 10K, 10M, 20M, 50K, 50M + 10M Ruck

Beast of The Brazos (Waco TX) [Sign Up](#)

Apr 4th | 5K, 10M, 20M, 50K, 50M + 10M Ruck

GOLIATH'S 50



AWARDS

"Texas Legends Finisher"

Anyone who completes 2/3 races in this series receives 2 collectible medals in addition to an earned Texas Legends Series Engraved Wood Slab

BEAST OF THE BRAZOS



"Ultimate Texas Legends Finisher"

Anyone who completes 3/3 races in this series receives 3 collectible medals in addition to an earned Texas Legends Series Engraved Wood Slab + Texas Legends Series Jacket