



**PARTICIPANT GUIDE**  
**September 6, 2025**  
**Weatherford, TX**

**BROUGHT TO YOU BY**



**TEXAS**  
**OUTLAW**  
**RUNNING**





# WELCOME

**5K, 10K, 13.1M + 10K RUCK**

**Sep 6, 2025**

**Lake Mineral Wells State  
Park Trailway**

**Weatherford Trailhead**

Welcome to the Lone Star Night Run! This is an original event crafted by Texas Outlaw Running Company and is a part of our Texas Summer Night Series. This race follows a 13 mile out and back. We are so excited for the amazing weekend on the beautiful rocky, dirt, and single track trails.

We encourage you to take time to carefully read through this participant guide to help better prepare you for your race that's ahead.

If you have any questions after reading through please email us at: [TexasOutlawRunning@gmail.com](mailto:TexasOutlawRunning@gmail.com)

## **Saturday**

- \*RACE BRIEFS 10 MIN. BEFORE EACH RACE.\*
- \*Please arrive 30 min. before your start time\*
- 6:30-8:30PM - PACKET PICKUP + TEXAS OUTLAW POP UP STORE
- 7PM - SHUTTLE BEGINS
- 8:30PM - 5K, 10K, HALF MARATHON RUNS & 10K RUCK START

## **SUNDAY**

- 12:30AM - RACE CUTOFF/SHUTTLE ENDS (4 HOURS)

**TEXAS  
OUTLAW  
RUNNING**





# GENERAL INFO

## DRIVING DIRECTIONS

The start and finish line will be located near the parking lot for the Lake Mineral Wells State Park Trailhead. When driving south east on Lake Mineral Wells state Park Trailway, you will take a slight left into the parking lot. The start finish line will be in the back.

## RESTROOMS

Park restrooms will be available outside the start/finish area.

## PARKING

First come first serve parking will be at the **trailway**. Overflow parking will be at the **soccer fields**. Participants will be shuttled back and forth from the race.

## RACE TIMING

We will be using chip timing. Please wear your bib on the front of you so the machine can pick up your number as you near the finish line.

## MEDICAL

We will be using nearby public medical personnel. PLEASE CALL 911 in case of an emergency.



## AID STATIONS

We will have one aid station and two hydration stations.

### Main Aid Station

(**Start/Finish Line**) includes cold foods, snacks, water, electrolytes (Gatorade) & pickle juice.

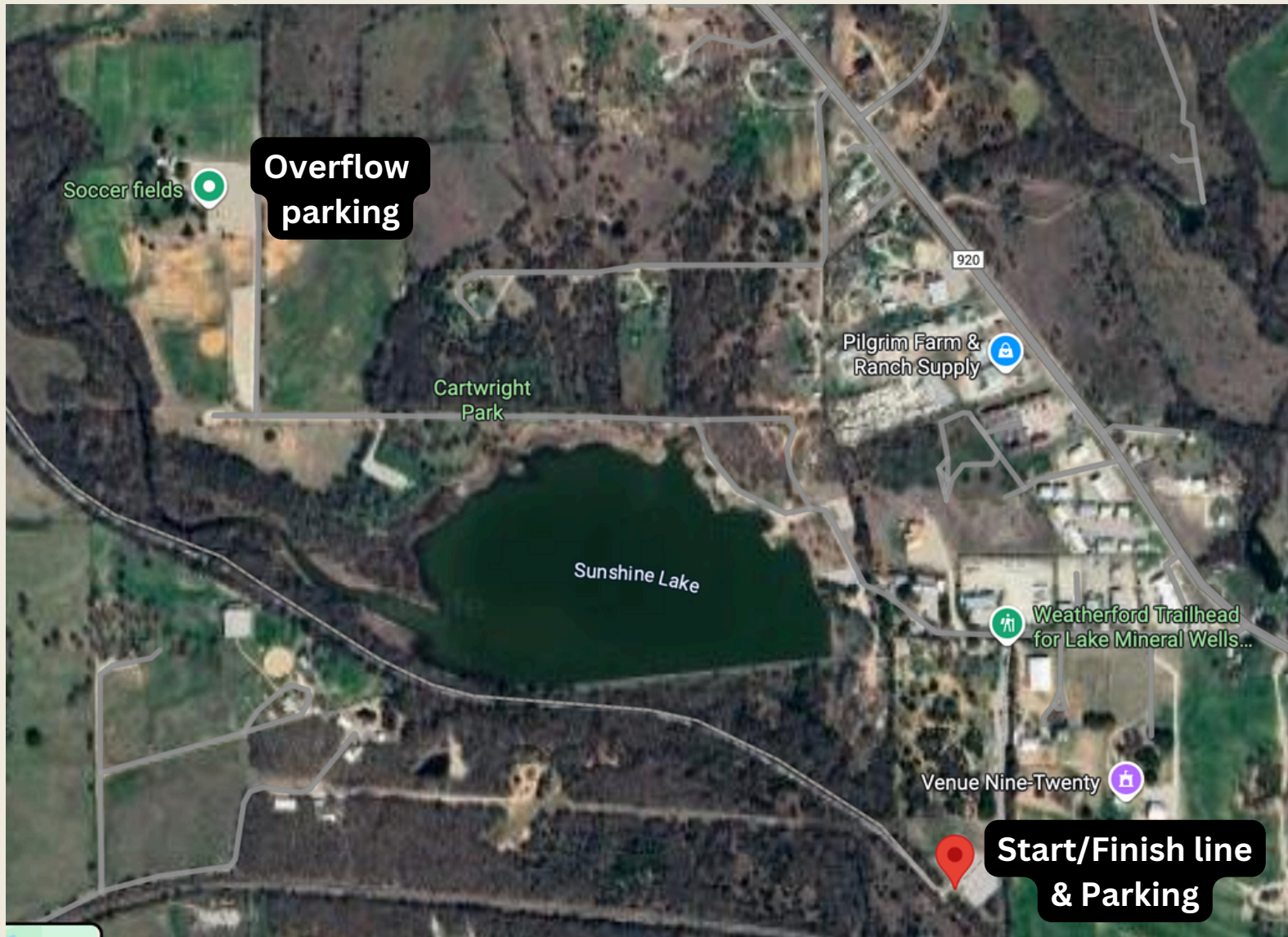
### Hydration Station

(**3/10 mile**) includes water, electrolytes (Gatorade) & pickle juice.

### Hydration Station

(**5/8 mile**) includes water, electrolytes (Gatorade) & pickle juice.

# LOCATING RACE/PARKING

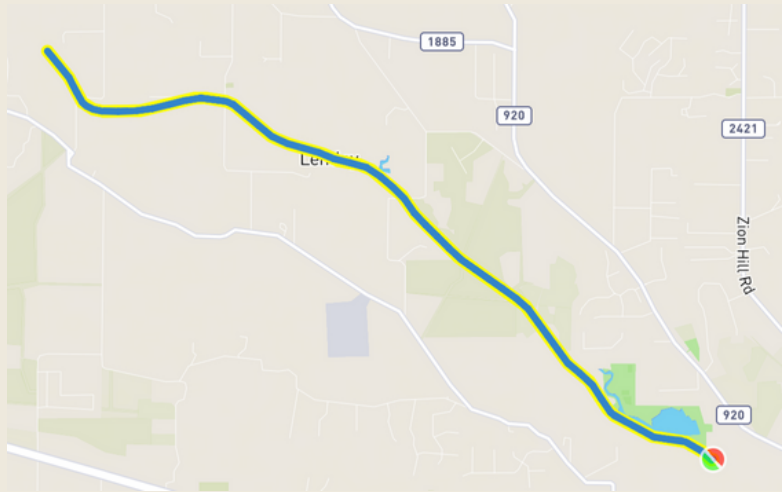


Overflow parking will take place a mile down the road at the Cartwright Park soccer fields where a shuttle will transport runners to the start line and back when they finish.

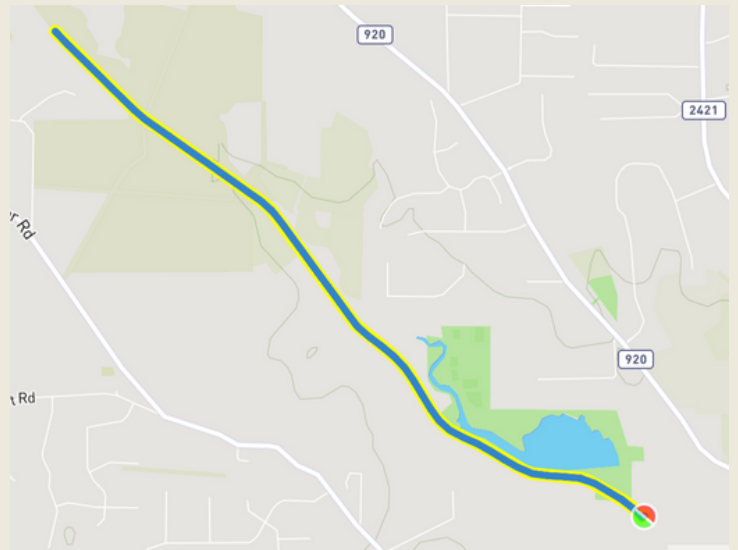


# COURSE MAP

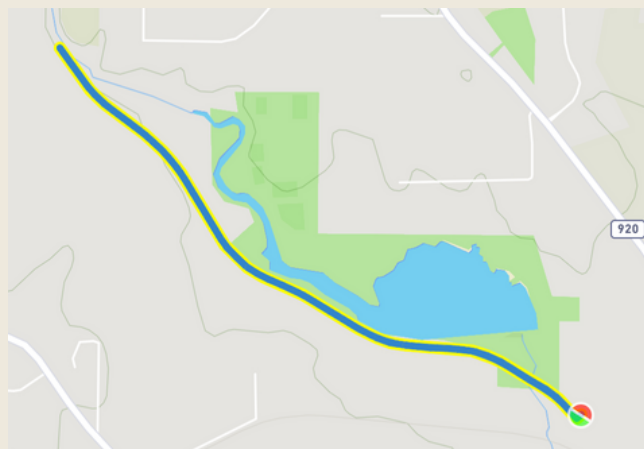
## Half Marathon Course



## 10K Course



## 5K Course







# COURSE DETAILS

## COURSE PROFILE

The Lone Star Night Run is a 5K, 10K, Half Marathon run & 10K RUCK held on Lake Mineral Wells State Park's Trailway in the foothills of North Texas. The course is open and paved with soft fine gravel. The race follows an out & back course beginning and ending at the Weatherford Trailhead.







# IMPORTANT

## **DROPPING OUT OF THE RACE**

You must notify the race director at the start/finish line **BEFORE** leaving the race site if you decide to quit or drop out of the race.

## **BIBS**

Please make sure that the bib number is visual and on the front of your body. We will use your bib number to identify you and record your time.

## **CUPLESS RACE/CARRYING**

To reduce waste out on the trails and in general we follow the cupless race protocol. This means that we will not serve any cups at aid stations for drinks. Please bring your own water carrying system with at least 16 oz.







# COURSE MARKINGS



The trails will consist of white and orange signage.



# RACE RULES

## TRAIL RUNNING RULES

- No Littering (If caught disqualification will occur.)
- Runners must follow the marked course and no cutting the course.
- Race cutoff will be enforced.
- Be aware of your surroundings. You're partially in the wilderness, there can be wild animals/snakes.
- Please be respectful to all volunteers, race staff, and other race personnel.

## WEATHER FORECAST as of 09/03/25 for Saturday 6PM - 9PM - 12AM

Temp Forecast: 79° - 73° - 70°

Feels Like: 78° - 72° - 69°

Rain: 25%

Wind: 17mph NE - 16mph NE - 16mph NE



**TEXAS  
OUTLAW  
RUNNING**





# SOCIAL MEDIA



## INSTAGRAM

@TexasOutlawRunning

## FACEBOOK

@TexasOutlawRunning

## TWITTER

@RunningOutlaw

## YOUTUBE

Texas Outlaw Running Company

## PODCAST

Texas Outlaw Running Talk Show



[Click Here](#) to join the conversation in our Facebook Event.

TEXAS  
OUTLAW  
RUNNING

