



NATURE
NATE'S
— HONEY CO. —



PARTICIPANT GUIDE
December 20, 2025
Valley View, TX

BROUGHT TO YOU BY



**TEXAS
OUTLAW
RUNNING**



WELCOME

5K, 10K, 25K, 50K, 100K + 25K RUCK

Dec. 20, 2025

**Ray Roberts Lake State Park -
Johnson Branch Unit**

100 Pw 4153 | Valley View, Texas

Welcome to the Naughty Hog. This is an original event crafted by Texas Outlaw Running Company. The Naughty Hog, Title Sponsored by Nature Nate's, is an endurance event that follows a 25K loop and out-and-backs for the shorter distances. We are so excited for the amazing weekend on the trail.

We encourage you to take time to carefully read through this participant guide to help better prepare you for your race that's ahead.

If you have any questions after reading through please email us at: info@TexasOutlawRunning.com

Friday

Early Packet Pickup- 3:00 to 5:00 pm

Saturday

RACE DAY

Packet Pickup - 6:00 am to 8:00 am

100k, 50k & 25k starts- 7:00 am

10k starts- 7:55 am

5k starts- 8:00 am



**TEXAS
OUTLAW
RUNNING**





GENERAL INFO

DRIVING DIRECTIONS

The start and finish line will be located at the Lake Ray Roberts Johnson Branch Nature Center. When driving north on Johnson State pk, the entrance to the Nature Center will be to the left towards the end of the road .

RESTROOMS

Restrooms will be available outside the start/finish area.



MEDICAL

We will be using nearby public medical personnel. PLEASE CALL 911 in case of an emergency.

RACE TIMING

We will utilize the UltraSignup timing software (manual time.) We will time you using your bib number so please make sure your bib number is visible on the front of your body.

MAIN AID STATION

(MILE 0, 3, 6, 15)

The main aid station will be at the start/finish line. The menu includes: Beverages - water, electrolytes, pickle juice & ice. Food - hot/cold foods, and other snacks.

PARKING AVAILABLE
DROP BAGS AVAILABLE

SANTA'S AID STATION

(MILE 1.7, 4.6, 7.7, 13.7)

The menu includes: Beverages - water, electrolytes, pickle juice & ice. Food - hot/cold foods, and other snacks.

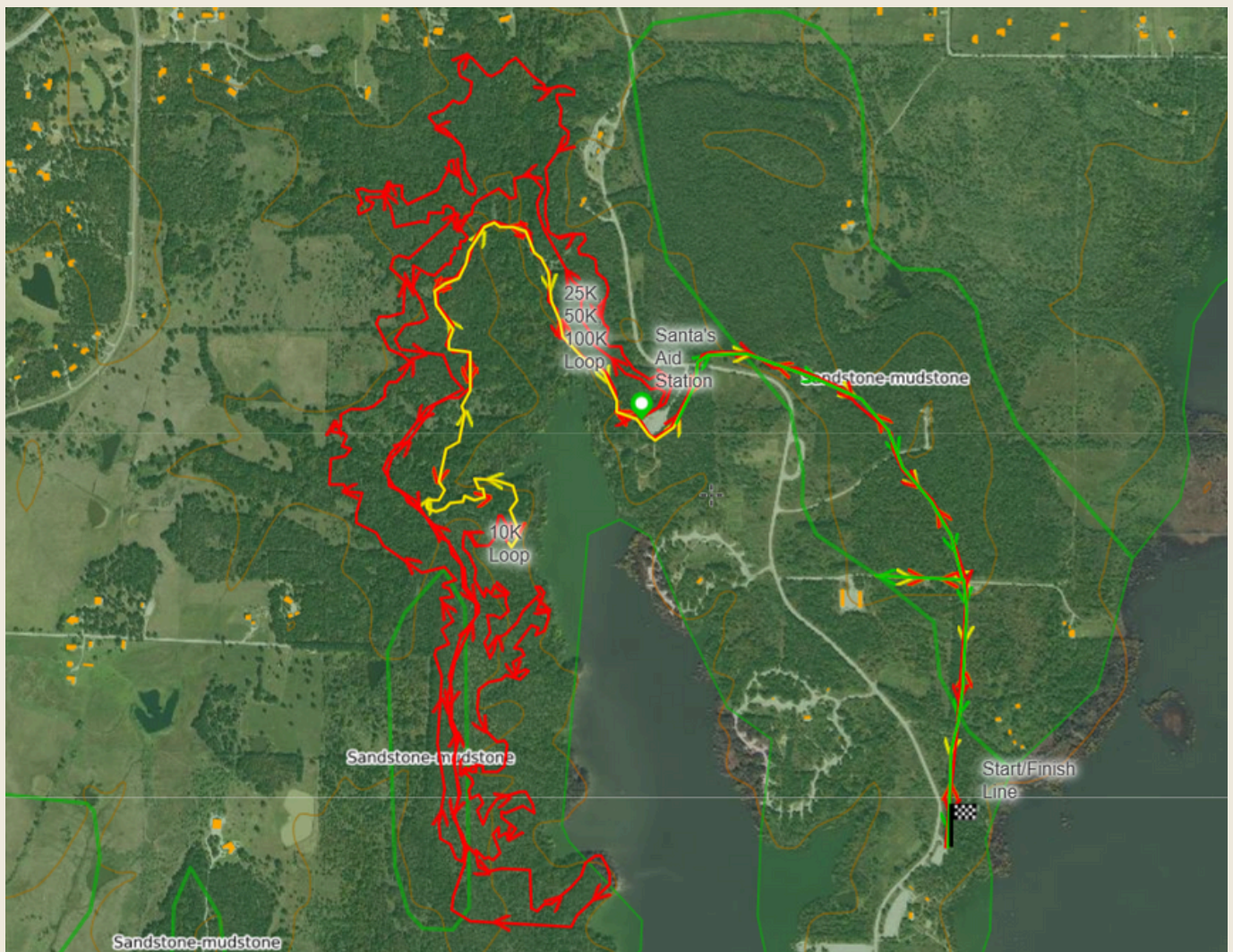
PARKING AVAILABLE
DROP BAGS AVAILABLE

***Aid Station locations depend on your race distance, please check our [website](#) to know for sure the miles you hit each aid station.**



LOCATING RACE/ COURSE MAP

Green- 5K Yellow- 10K Red- 25K, 50K, 100K loop

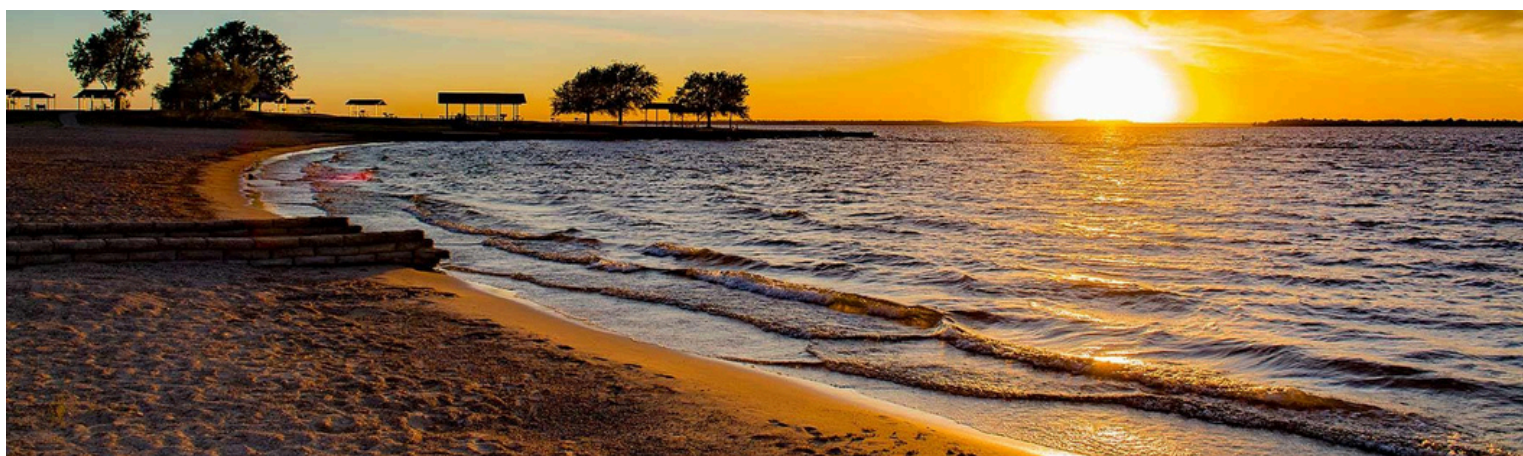




COURSE DETAILS

COURSE PROFILE

The Naughty Hog Trail Run is a trail run held at Ray Roberts Lake State Park. Featuring beautiful scenery and challenging rooty, dirt, and grass trails with over 900 feet of elevation gain for the the 25K loop, the race follows a 15 Mile/25K looped course and a unique route for the 10K and 5K, beginning and ending at the Johnson Branch Nature Center.





IMPORTANT

DROPPING OUT OF THE RACE

You must notify the race director at the start/finish line BEFORE leaving the race site if you decide to quit or drop out of the race.

BIBS

Please make sure that the bib number is visible and on the front of your body. We will use your bib number to identify you and record your time.

CUPLESS RACE/CARRYING

To reduce waste out on the trails and in general we follow the cupless race protocol. This means that we will not serve any cups at aid stations for drinks. Please bring your own water carrying system with at least 16 oz.

CAMPING

If you're traveling out of town there are several sites within 5 minutes of the start/finish line. [Check the race page for camping.](#)





COURSE MARKINGS

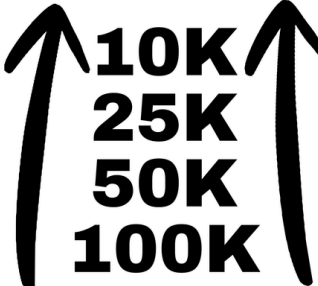


5K

TURN AROUND

TEXAS
OUTLAW
RUNNING



10K
25K
50K
100K

STRAIGHT


TEXAS
OUTLAW
RUNNING



 **CROSS ROAD YIELD** 

TEXAS
OUTLAW
RUNNING



10K

TURN AROUND

TEXAS
OUTLAW
RUNNING



SANTA'S



AID STATION

The trails will consist of white and orange signage.



RACE RULES

TRAIL RUNNING RULES

- No Littering (If caught disqualification will occur.)
- Runners must follow the marked course and no cutting the course.
- Runners must have their phones on them, on, etc during the race.
- Race cutoff will be enforced.
- Be aware of your surroundings. You're partially in the wilderness, there can be wild animals/snakes.
- Please be respectful to all volunteers, race staff, and other race personnel.

WEATHER FORECAST as of 12/18/25 for Saturday 6AM - 9AM - 1PM

Temp Forecast: 50° - 53° - 71°

Feels Like: 37° - 46° - 69°

Rain: 0%

Wind: 15mph SW - 16mph SW - 13mph SW





AWARDS

FINISHER AWARDS

- Naughty Hog Tri-blend Long Sleeve
- Naughty Hog Hand Crafted Made in Texas Finisher Medal
 - Naughty Hog RUCK Patch Made in Texas
 - 1st Place awards for all distances M & F
- Special "50K Finisher" Naughty Hog Finisher Medal
- Special "100K Finisher" Naughty Hog Buckle
 - DFL "Dead Freakin' Last" awards for 100K





SPONSORS

THANK YOU



NATURE
NATE'S[®]
— HONEY CO. —



TEXAS
OUTLAW
RUNNING



SOCIAL MEDIA



INSTAGRAM

@TexasOutlawRunning

FACEBOOK

@TexasOutlawRunning

TWITTER

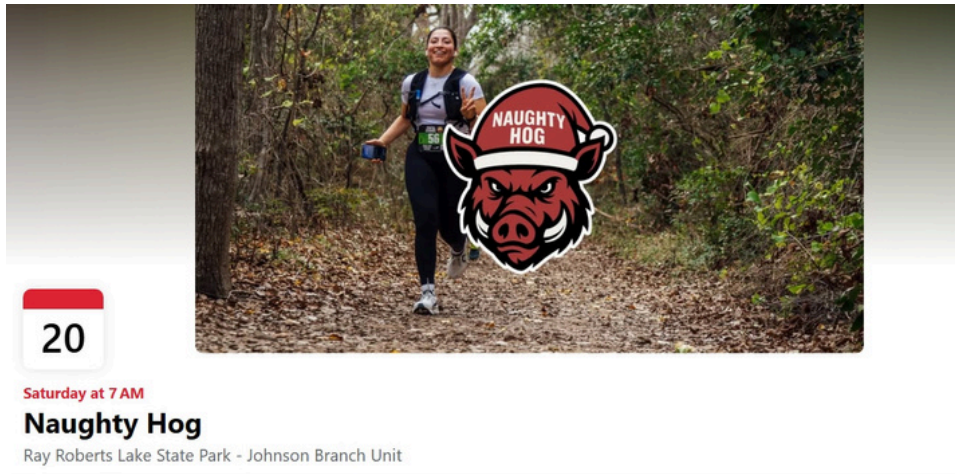
@RunningOutlaw

YOUTUBE

Texas Outlaw Running Company

PODCAST

Texas Outlaw Running Talk Show



[Click Here](#) to join the conversation in our Facebook Event.



TEXAS
OUTLAW
RUNNING

